

**KEY**

- Site Boundary
- Turbine
- Hagshaw Hill Extension Management Plan Area

**Black Grouse Lek\***

- 2004
- 2010
- 2015

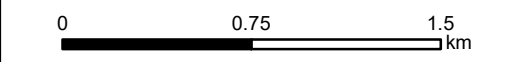
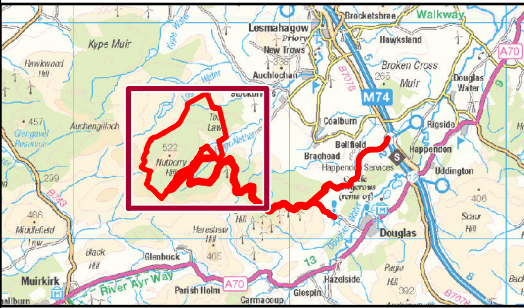
**Black Grouse Observation\***

- 2003
- 2009
- 2010
- 2011
- 2013
- 2014
- 2015
- 2017

**Black Grouse Droppings\***

- 2013

\*Sources: SPR - Hagshaw Hill Extension Monitoring Records, Environmental Statements for Cumberhead and Nutberry, Scottish Power Renewables, SRG Renewables and NatureScot



Scale 1:30,000 @ A3

Cumberhead West Wind Farm  
Environmental Impact Assessment Report  
**Figure 8.8**

**Black Grouse Historic Records**

Date: 30/10/2020 Drawn by: LNF Checked by: RD Version: Rev1

Project Number: 2694